

**Georgia Department of Community Affairs
Office of Research**

COUNTY JAIL INMATE POPULATION REPORT*

**Inmate Counts Reported To GBI/GCIC By Each Sheriff's Office
For Their Inmate Population AS OF: Thursday, February 7, 2013**

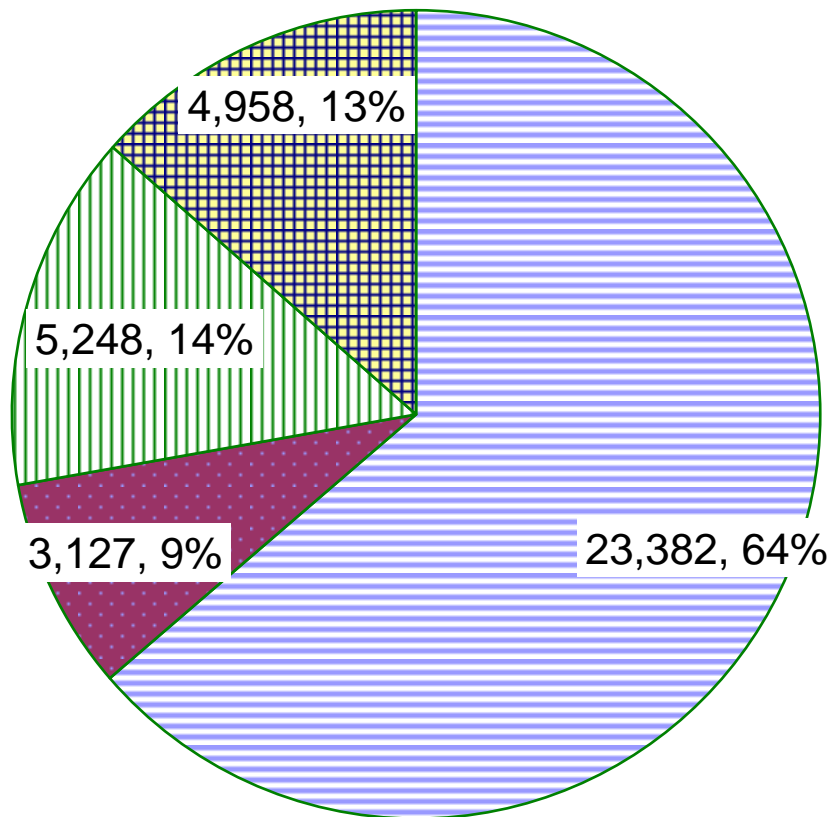
DATA SUMMARY

ITEM	FEB. 2013		JAN. 2013		INCR /DECR	
	#	%	#	%	#	%
1 Number of Jail Inmates	36,715		35,743		972	
2 Capacity of Jails Reporting (permanent beds)	47,086		47,015		71	
3 Percent of Jail Capacity		78%		76%		2%
4 Number of Jails Over Capacity	28		17		11	
5 Inmates Sentenced to State Institutions	3,127		3,525		-398	
6 Percent of State-Sentenced Inmates Housed at County Level		9%		10%		-1%
7 Number of Inmates Awaiting Trial	23,382		22,450		932	
8 Percent of Inmates Awaiting Trial		64%		63%		1%
9 Number of Inmates Sentenced to County Jails	5,248		4,846		402	
10 Percent of Inmates Sentenced to County Jails		14%		14%		0%
11 Number of Other Inmates	4,958		4,922		36	
12 Percent of Other Inmates		14%		14%		0%
13 Percent of Jails Reporting		100%		100%		0%
14 Number of Counties with Jails	146		146		0	

""* In cooperation with the Georgia Crime Information Center, the Georgia Department of Community Affairs compiles and publishes this report for the Georgia Sheriff's Association and the Association County Commissioners of Georgia. All data in this report has been provided to GBI/GCIC by Sheriff's offices and transferred from the Georgia Bureau of Investigation to DCA for publication."

Report Distribution Date: 2/22/2013

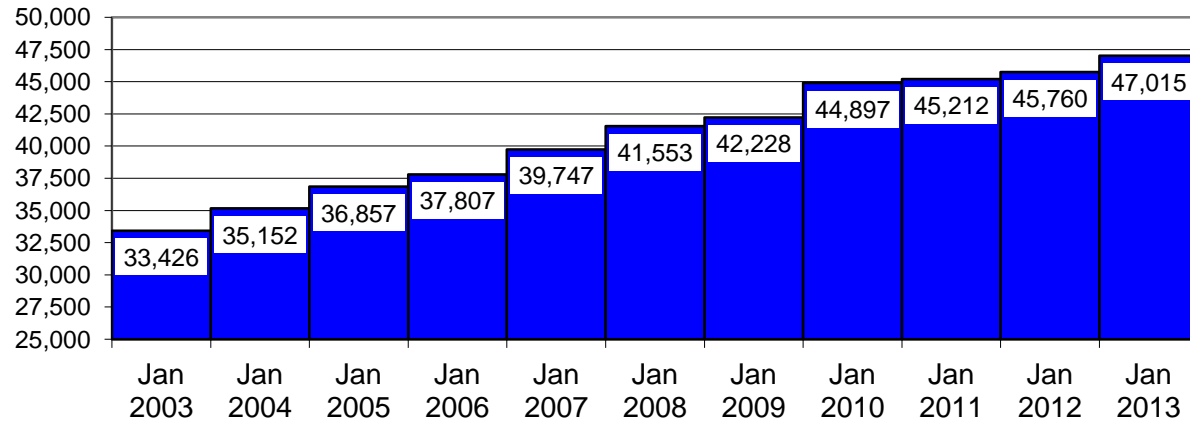
Jail Composition February 2013



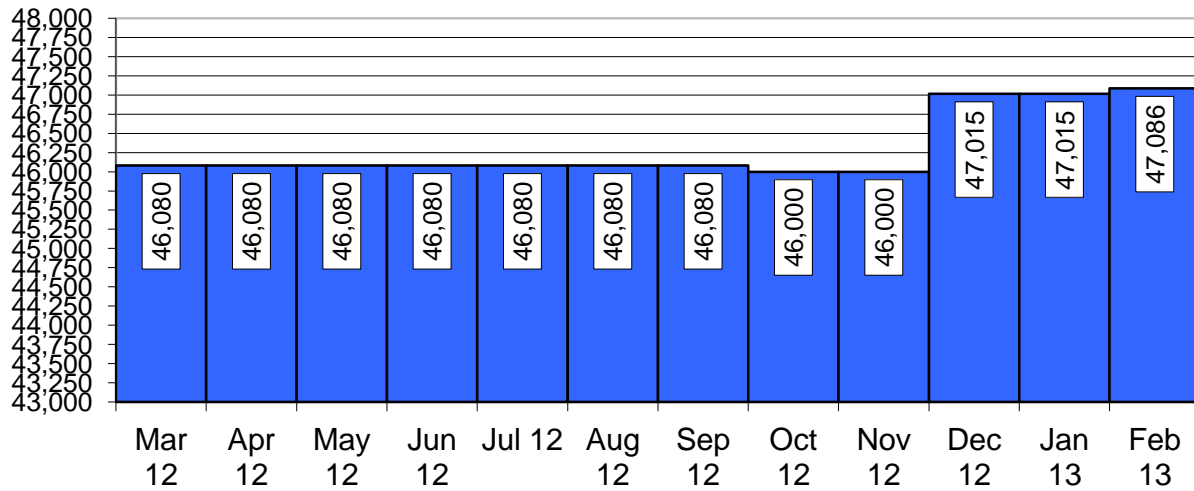
- Inmates Awaiting Trial
- Inmates Sentenced to State Institutions
- County Sentenced Inmates
- Other Inmates

Georgia Department of Community Affairs
Office of Research

COUNTY JAIL CAPACITY - 10 Year ANNUAL TREND
Jan 2003 to Jan 2013

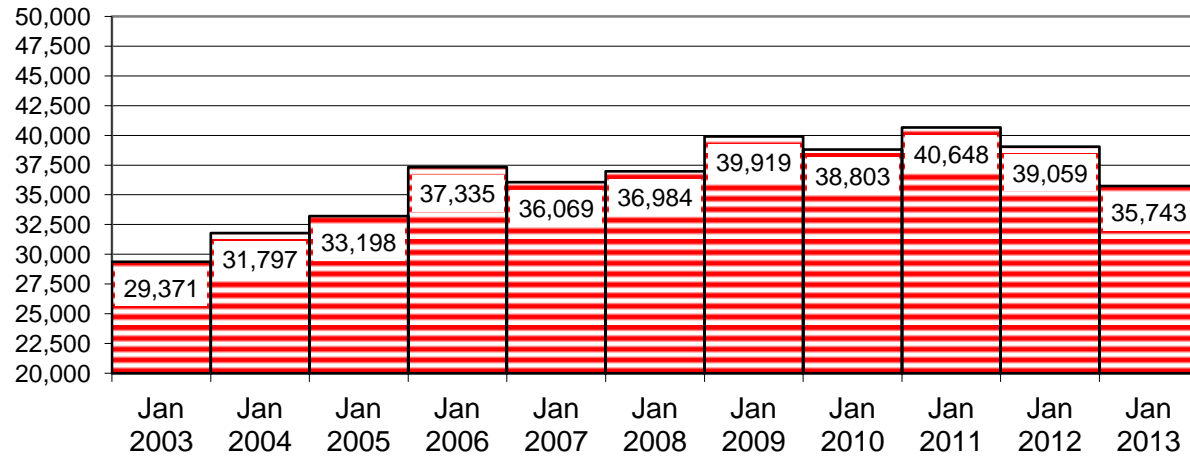


COUNTY JAIL CAPACITY - LAST 12 MONTHS

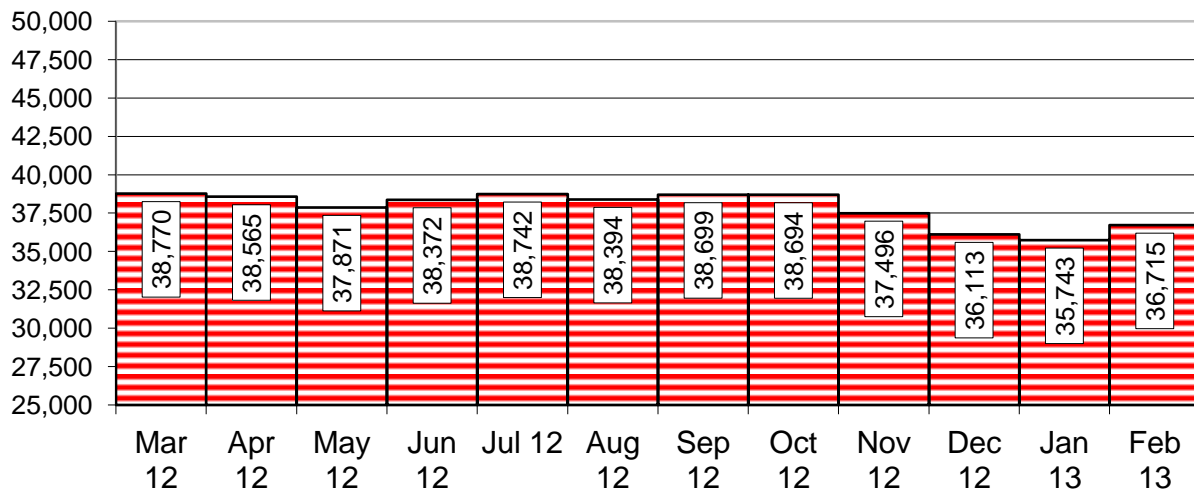


Georgia Department of Community Affairs
Office of Research

JAIL POPULATION - 10 Year ANNUAL TREND
Jan 2003 - Jan 2013



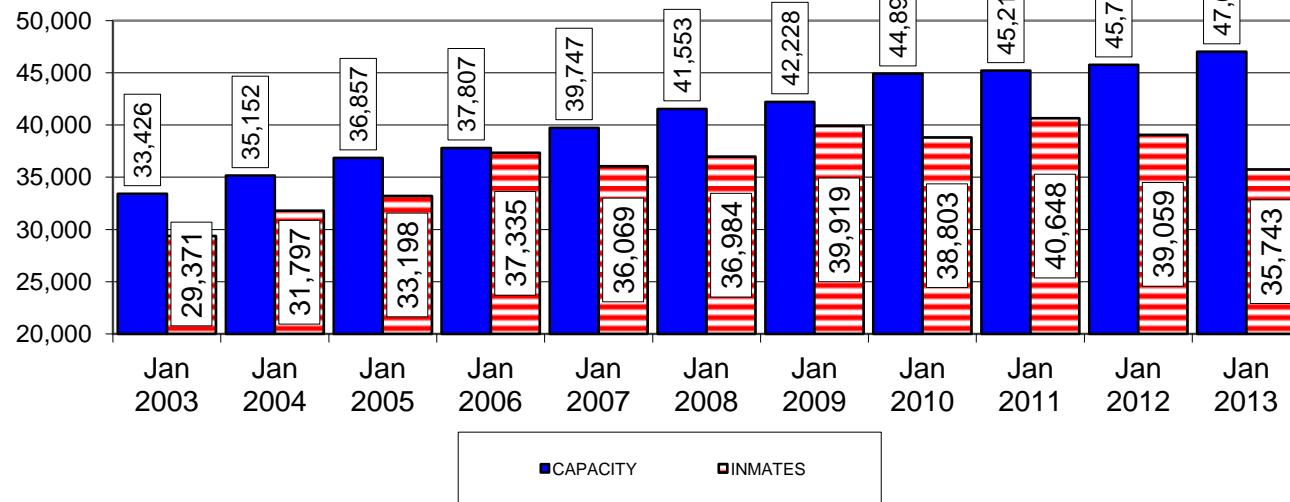
JAIL POPULATION - Last 12 Months



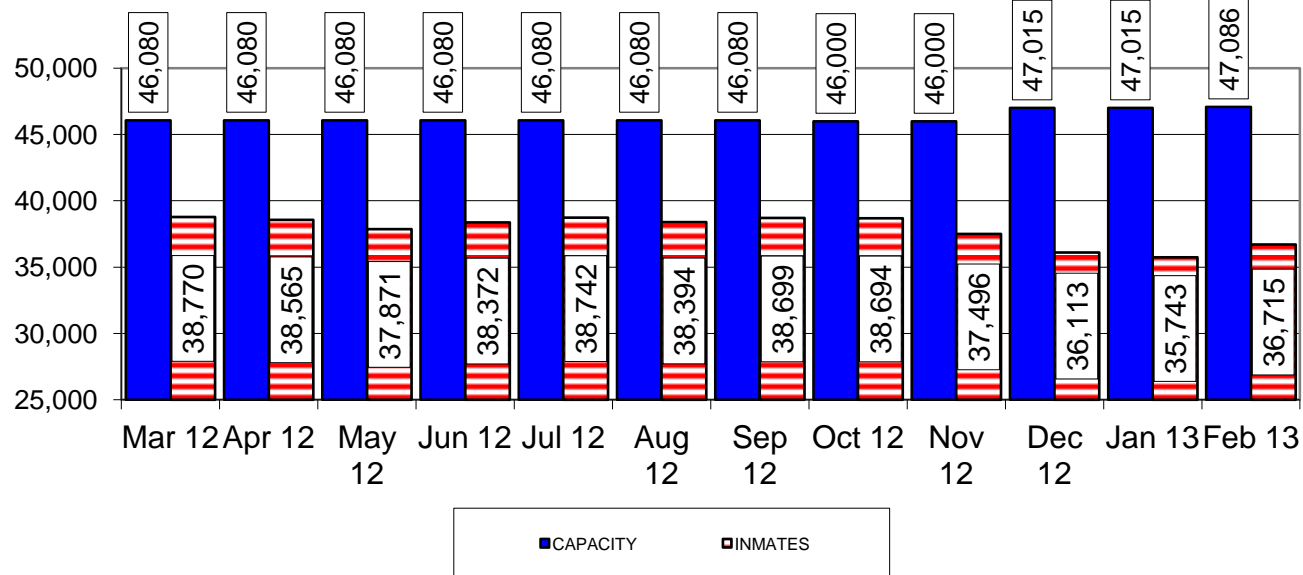
Source: All data in this report has been provided to DCA by the Georgia Bureau of Investigation (GBI).

Georgia Department of Community Affairs
Office of Research

JAIL CAPACITY VS INMATE POPULATION - 10 Year ANNUAL TREND
Jan 2003 - Jan 2013

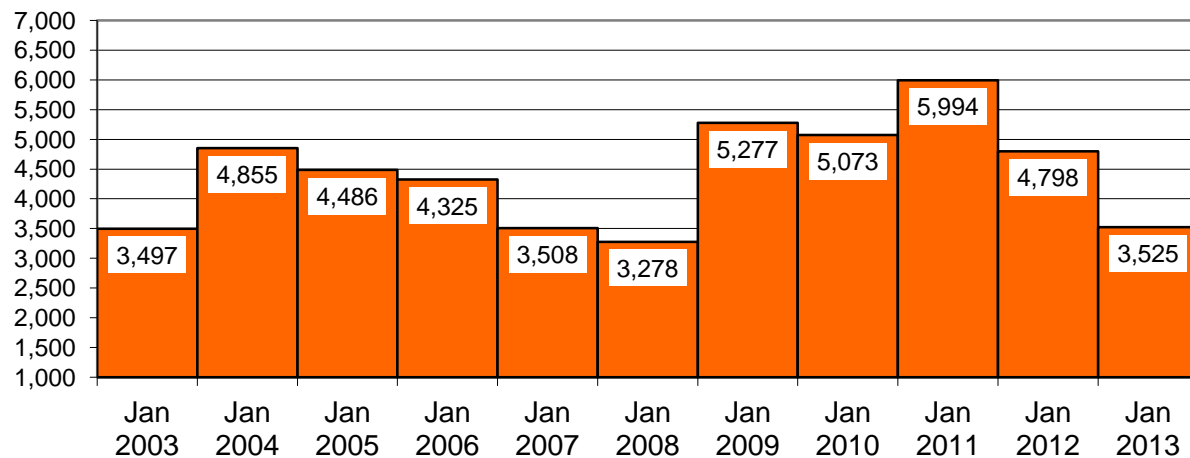


JAIL CAPACITY VS INMATE POPULATION - LAST 12 MONTHS

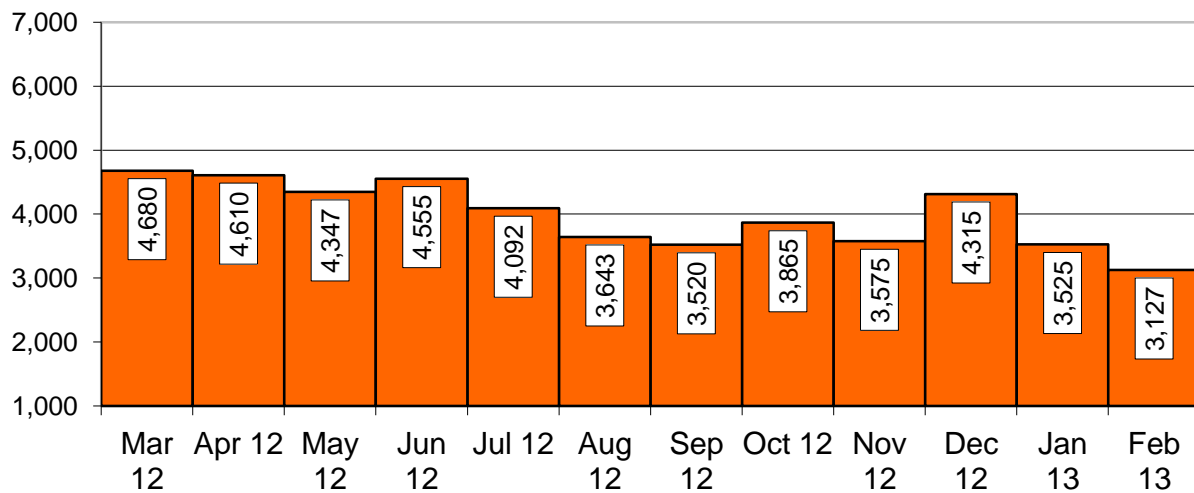


Georgia Department of Community Affairs
Office of Research

INMATES SENTENCED TO STATE - 10 Year ANNUAL TREND
Jan 2003 - Jan 2013

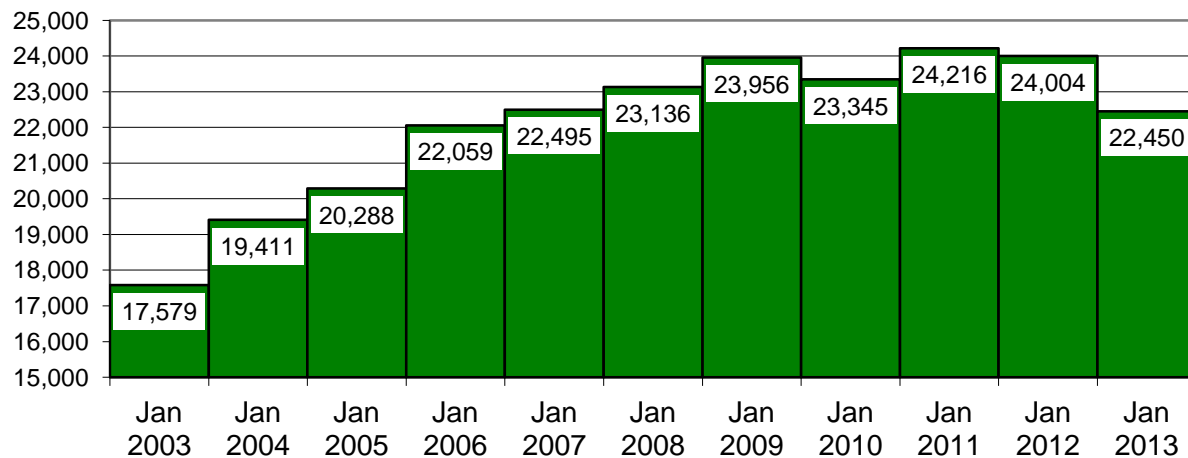


INMATES SENTENCED TO STATE - Last 12 Months

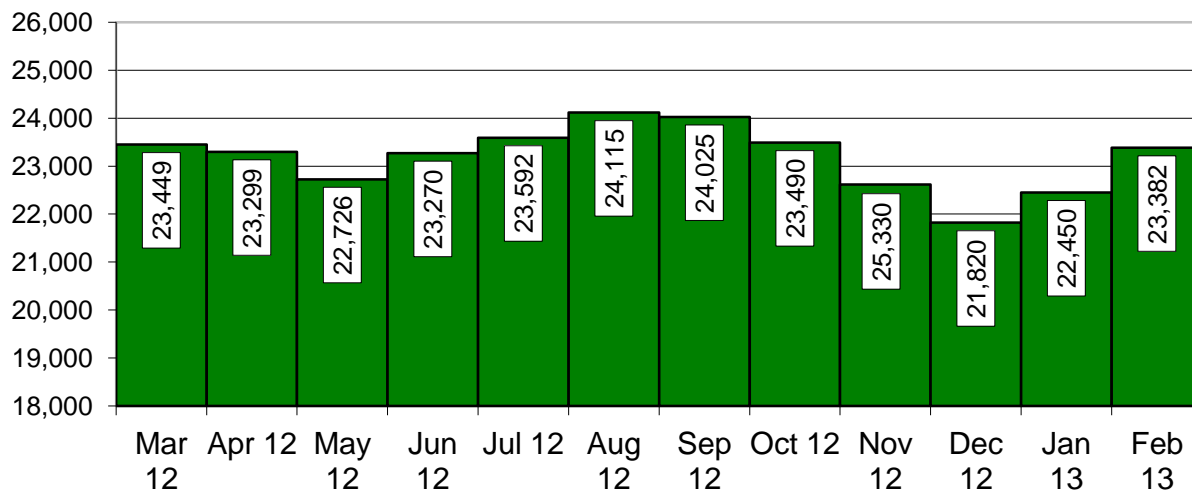


Georgia Department of Community Affairs
Office of Research

INMATES AWAITING TRIAL IN JAIL - 10 Year ANNUAL TREND
Jan 2003 - Jan 2013



INMATES AWAITING TRIAL IN JAIL - Last 12 Months



County Jail Report
Primary Jail Capacity Data
February 2013

(Does not include Inmates housed in other detention facilities such as Work Release Centers, County Prisons, etc.)

	Jurisdiction	Total Number of Inmates		Inmates as % of Capacity	Number of Inmates Sentenced to State		Number of Inmates Awaiting Trial in Jail		Number of Inmates Serving County Sentence		Number of Other Inmates	
		In Jail	Jail Capacity		Number	% of Total	Number	% of Total	Number	% of Total	Number	% of Total
001	APPLING	63	84	75%	4	6%	43	68%	5	8%	11	17%
002	ATKINSON	16	18	89%	1	6%	10	63%	1	6%	4	25%
003	BACON	56	68	82%	3	5%	42	75%	5	9%	6	11%
004	BAKER NO JAIL	0	0	0%	0	0%	0	0%	0	0%	0	0%
005	BALDWIN	199	316	63%	21	11%	40	20%	39	20%	99	50%
006	BANKS	44	60	73%	3	7%	24	55%	5	11%	12	27%
007	BARROW	221	391	57%	14	6%	149	67%	52	24%	6	3%
008	BARTOW	567	471	120%	52	9%	265	47%	200	35%	50	9%
009	BEN HILL	82	136	60%	17	21%	49	60%	7	9%	9	11%
010	BERRIEN	67	69	97%	0	0%	0	0%	45	67%	22	33%
011	BIBB	974	966	101%	68	7%	474	49%	58	6%	374	38%
012	BLECKLEY	35	72	49%	1	3%	30	86%	0	0%	4	11%
013	BRANTLEY	102	124	82%	19	19%	45	44%	5	5%	33	32%
014	BROOKS	74	112	66%	1	1%	60	81%	9	12%	4	5%
015	BRYAN	51	68	75%	13	25%	34	67%	2	4%	2	4%
016	BULLOCH	273	387	71%	18	7%	133	49%	54	20%	68	25%
017	BURKE	125	138	91%	4	3%	80	64%	9	7%	32	26%
018	BUTTS	75	316	24%	1	1%	69	92%	5	7%	0	0%
019	CALHOUN	18	42	43%	4	22%	3	17%	3	17%	8	44%
020	CAMDEN	136	108	126%	12	9%	116	85%	5	4%	3	2%
021	CANDLER	39	72	54%	12	31%	24	62%	3	8%	0	0%
022	CARROLL	647	682	95%	25	4%	453	70%	9	1%	160	25%
023	CATOOSA	215	248	87%	34	16%	150	70%	17	8%	14	7%
024	CHARLTON NO JAIL	0	0	0%	0	0%	0	0%	0	0%	0	0%
025	CHATHAM	1522	1524	100%	41	3%	1385	91%	83	5%	13	1%
026	CHATTAHOOCHEE NO JAIL	0	0	0%	0	0%	0	0%	0	0%	0	0%
027	CHATTOOGA	152	93	163%	80	53%	60	39%	2	1%	10	7%
028	CHEROKEE	586	512	114%	21	4%	512	87%	32	5%	21	4%
029	CLARKE	458	447	102%	33	7%	308	67%	112	24%	5	1%
030	CLAY NO JAIL	0	0	0%	0	0%	0	0%	0	0%	0	0%
031	CLAYTON	1469	1920	77%	95	6%	748	51%	500	34%	126	9%
032	CLINCH	14	26	54%	7	50%	5	36%	1	7%	1	7%
033	COBB	1963	1925	102%	287	15%	1311	67%	365	19%	0	0%
034	COFFEE	219	448	49%	31	14%	124	57%	22	10%	42	19%
035	COLQUITT	167	210	80%	9	5%	103	62%	40	24%	15	9%
036	COLUMBIA	300	266	113%	16	5%	236	79%	31	10%	17	6%
037	COOK	109	108	101%	1	1%	40	37%	23	21%	45	41%
038	COWETA	309	300	103%	15	5%	202	65%	77	25%	15	5%
039	CRAWFORD	13	24	54%	1	8%	4	31%	0	0%	8	62%
040	CRISP	143	170	84%	13	9%	104	73%	16	11%	10	7%
041	DADE	39	99	39%	7	18%	22	56%	9	23%	1	3%
042	DAWSON	156	200	78%	6	4%	78	50%	69	44%	3	2%

County Jail Report
Primary Jail Capacity Data
February 2013

(Does not include Inmates housed in other detention facilities such as Work Release Centers, County Prisons, etc.)

	Jurisdiction	Total Number of Inmates In Jail	Jail Capacity	Inmates as % of Capacity	Number of Inmates Sentenced to State		Number of Inmates Awaiting Trial in Jail		Number of Inmates Serving County Sentence		Number of Other Inmates	
					Number	% of Total	Number	% of Total	Number	% of Total	Number	% of Total
043	DECATUR	84	175	48%	8	10%	65	77%	11	13%	0	0%
044	DEKALB	2658	3636	73%	144	5%	2046	77%	362	14%	106	4%
045	DODGE	66	72	92%	15	23%	51	77%	0	0%	0	0%
046	DOOLY	46	155	30%	3	7%	41	89%	0	0%	2	4%
047	DOUGHERTY	775	1230	63%	75	10%	556	72%	114	15%	30	4%
048	DOUGLAS	721	1500	48%	112	16%	446	62%	146	20%	17	2%
049	EARLY	33	66	50%	7	21%	26	79%	0	0%	0	0%
050	ECHOLS	0	0	0%	0	0%	0	0%	0	0%	0	0%
051	EFFINGHAM	120	130	92%	8	7%	96	80%	10	8%	6	5%
052	ELBERT	74	96	77%	21	28%	37	50%	7	9%	9	12%
053	EMANUEL	114	102	112%	14	12%	32	28%	5	4%	63	55%
054	EVANS	15	26	58%	5	33%	10	67%	0	0%	0	0%
055	FANNIN	69	84	82%	7	10%	56	81%	2	3%	4	6%
056	FAYETTE	294	384	77%	24	8%	238	81%	32	11%	0	0%
057	FLOYD	688	838	82%	53	8%	380	55%	174	25%	81	12%
058	FORSYTH	187	227	82%	70	37%	88	47%	29	16%	0	0%
059	FRANKLIN	83	72	115%	5	6%	59	71%	18	22%	1	1%
060	FULTON	2324	2688	86%	25	1%	1553	67%	148	6%	598	26%
061	GILMER	210	142	148%	4	2%	194	92%	5	2%	7	3%
062	GLASCOCK	0	0	0%	0	0%	0	0%	0	0%	0	0%
063	GLYNN	430	565	76%	35	8%	292	68%	18	4%	85	20%
064	GORDON	221	376	59%	25	11%	115	52%	69	31%	12	5%
065	GRADY	96	125	77%	8	8%	31	32%	26	27%	31	32%
066	GREENE	36	125	29%	20	56%	8	22%	4	11%	4	11%
067	GWINNETT	2281	2744	83%	257	11%	1480	65%	131	6%	413	18%
068	HABERSHAM	99	130	76%	2	2%	69	70%	12	12%	16	16%
069	HALL	797	1026	78%	46	6%	225	28%	242	30%	284	36%
070	HANCOCK	58	80	73%	4	7%	27	47%	0	0%	27	47%
071	HARALSON	114	120	95%	10	9%	71	62%	33	29%	0	0%
072	HARRIS	87	100	87%	2	2%	55	63%	2	2%	28	32%
073	HART	51	50	102%	6	12%	42	82%	2	4%	1	2%
074	HEARD	51	60	85%	6	12%	28	55%	10	20%	7	14%
075	HENRY	635	908	70%	38	6%	278	44%	319	50%	0	0%
076	HOUSTON	518	507	102%	52	10%	377	73%	89	17%	0	0%
077	IRWIN	715	1201	60%	0	0%	17	2%	1	0%	697	97%
078	JACKSON	145	452	32%	1	1%	121	83%	5	3%	18	12%
079	JASPER	21	64	33%	2	10%	15	71%	2	10%	2	10%
080	JEFFDAVIS/HAZ	52	64	81%	3	6%	21	40%	27	52%	1	2%
081	JEFFERSON	102	128	80%	13	13%	21	21%	25	25%	43	42%
082	JENKINS	19	24	79%	4	21%	10	53%	0	0%	5	26%
083	JOHNSON	25	42	60%	4	16%	5	20%	1	4%	15	60%
084	JONES	130	125	104%	19	15%	79	61%	6	5%	26	20%

County Jail Report
Primary Jail Capacity Data
February 2013

(Does not include Inmates housed in other detention facilities such as Work Release Centers, County Prisons, etc.)

Jurisdiction	Total Number of Inmates			Inmates as % of Capacity		Number of Inmates Sentenced to State		Number of Inmates Awaiting Trial in Jail		Number of Inmates Serving County Sentence		Number of Other Inmates	
	In Jail	Jail Capacity		Capacity		Number	% of Total	Number	% of Total	Number	% of Total	Number	% of Total
085 LAMAR	61	158	39%	3	5%	39	64%	5	8%	14	23%		
086 LANIER	0	0	0%	0	0%	0	0%	0	0%	0	0%	0	0%
087 LAURENS	204	270	76%	22	11%	153	75%	11	5%	18	9%		
088 LEE	69	112	62%	6	9%	51	74%	12	17%	0	0%		
089 LIBERTY	243	300	81%	15	6%	151	62%	40	16%	37	15%		
090 LINCOLN	50	81	62%	2	4%	9	18%	4	8%	35	70%		
091 LONG	0	0	0%	0	0%	0	0%	0	0%	0	0%	0	0%
092 LOWNDES	708	920	77%	80	11%	505	71%	103	15%	20	3%		
093 LUMPKIN	63	150	42%	14	22%	25	40%	13	21%	11	17%		
094 MCDUFFIE	100	222	45%	4	4%	54	54%	12	12%	30	30%		
095 MCINTOSH	72	114	63%	5	7%	50	69%	0	0%	17	24%		
096 MACON	26	68	38%	3	12%	23	88%	0	0%	0	0%	0	0%
097 MADISON	73	64	114%	5	7%	38	52%	3	4%	27	37%		
098 MARION	17	30	57%	0	0%	13	76%	4	24%	0	0%		
099 MERIWETHER	86	106	81%	2	2%	75	87%	9	10%	0	0%		
100 MILLER	57	70	81%	1	2%	16	28%	15	26%	25	44%		
101 MITCHELL	92	116	79%	14	15%	47	51%	26	28%	5	5%		
102 MONROE	70	168	42%	4	6%	51	73%	11	16%	4	6%		
103 MONTGOMERY	0	0	0%	0	0%	0	0%	0	0%	0	0%	0	0%
104 MORGAN	66	192	34%	9	14%	1	2%	7	11%	49	74%		
105 MURRAY	111	120	93%	13	12%	65	59%	32	29%	1	1%		
106 MUSCOGEE	1137	1069	106%	68	6%	793	70%	157	14%	119	10%		
107 NEWTON	415	600	69%	84	20%	253	61%	47	11%	31	7%		
108 OCONEE	71	136	52%	8	11%	22	31%	15	21%	26	37%		
109 OGLETHORPE	55	64	86%	2	4%	38	69%	7	13%	8	15%		
110 PAULDING	202	299	68%	13	6%	131	65%	20	10%	38	19%		
111 PEACH	51	72	71%	9	18%	20	39%	10	20%	12	24%		
112 PICKENS	70	140	50%	4	6%	61	87%	2	3%	3	4%		
113 PIERCE	65	72	90%	5	8%	57	88%	3	5%	0	0%		
114 PIKE	56	34	165%	4	7%	46	82%	3	5%	3	5%		
115 POLK	178	362	49%	6	3%	47	26%	13	7%	112	63%		
116 PULASKI	27	42	64%	2	7%	22	81%	0	0%	3	11%		
117 PUTNAM	76	120	63%	9	12%	42	55%	16	21%	9	12%		
118 QUITMAN	0	0	0%	0	0%	0	0%	0	0%	0	0%	0	0%
119 RABUN	71	102	70%	4	6%	53	75%	10	14%	4	6%		
120 RANDOLPH	22	32	69%	4	18%	12	55%	5	23%	1	5%		
121 RICHMOND	782	910	86%	81	10%	572	73%	62	8%	67	9%		
122 ROCKDALE	329	692	48%	34	10%	233	71%	48	15%	14	4%		
123 SCHLEY	4	12	33%	3	75%	1	25%	0	0%	0	0%		
124 SCREVEN	50	247	20%	11	22%	29	58%	4	8%	6	12%		
125 SEMINOLE	59	54	109%	17	29%	25	42%	9	15%	8	14%		
126 SPALDING	392	547	72%	26	7%	323	82%	40	10%	3	1%		

County Jail Report
Primary Jail Capacity Data
February 2013

(Does not include Inmates housed in other detention facilities such as Work Release Centers, County Prisons, etc.)

Jurisdiction		Total Number of Inmates In Jail	Jail Capacity	Inmates as % of Capacity	Number of Inmates Sentenced to State		Number of Inmates Awaiting Trial in Jail		Number of Inmates Serving County Sentence		Number of Other Inmates	
					Number	% of Total	Number	% of Total	Number	% of Total	Number	% of Total
127	STEPHENS	127	192	66%	23	18%	75	59%	13	10%	16	13%
128	STEWART	0	14	0%	0	0%	0	0%	0	0%	0	0%
129	SUMTER	178	262	68%	20	11%	98	55%	3	2%	57	32%
130	TALBOT	15	22	68%	0	0%	13	87%	2	13%	0	0%
131	TALIAFERO NO JAIL	0	0	0%	0	0%	0	0%	0	0%	0	0%
132	TATTNALL	101	136	74%	12	12%	44	44%	17	17%	28	28%
133	TAYLOR	43	27	159%	1	2%	33	77%	4	9%	5	12%
134	TELFAIR	10	36	28%	0	0%	8	80%	0	0%	2	20%
135	TERRELL	30	55	55%	4	13%	20	67%	0	0%	6	20%
136	THOMAS	216	270	80%	21	10%	164	76%	28	13%	3	1%
137	TIFT	186	260	72%	33	18%	29	16%	115	62%	9	5%
138	TOOMBS	84	128	66%	17	20%	58	69%	2	2%	7	8%
139	TOWNS	25	50	50%	4	16%	13	52%	3	12%	5	20%
140	TREUTLEN	48	42	114%	7	15%	13	27%	7	15%	21	44%
141	TROUP	393	240	164%	27	7%	347	88%	6	2%	13	3%
142	TURNER	39	102	38%	0	0%	0	0%	34	87%	5	13%
143	TWIGGS	28	48	58%	0	0%	0	0%	28	100%	0	0%
144	UNION	64	57	112%	22	34%	27	42%	15	23%	0	0%
145	UPSON	128	213	60%	13	10%	90	70%	18	14%	7	5%
146	WALKER	201	225	89%	45	22%	146	73%	10	5%	0	0%
147	WALTON	370	440	84%	60	16%	229	62%	63	17%	18	5%
148	WARE	401	500	80%	13	3%	283	71%	62	15%	43	11%
149	WARREN NO JAIL	0	0	0%	0	0%	0	0%	0	0%	0	0%
150	WASHINGTON	65	52	125%	12	18%	40	62%	0	0%	13	20%
151	WAYNE	165	170	97%	17	10%	146	88%	0	0%	2	1%
152	WEBSTER NO JAIL	0	0	0%	0	0%	0	0%	0	0%	0	0%
153	WHEELER	5	18	28%	0	0%	3	60%	0	0%	2	40%
154	WHITE	82	64	128%	12	15%	57	70%	10	12%	3	4%
155	WHITFIELD	340	551	62%	4	1%	313	92%	16	5%	7	2%
156	WILCOX	41	16	256%	10	24%	23	56%	0	0%	8	20%
157	WILKES	33	80	41%	0	0%	14	42%	6	18%	13	39%
158	WILKINSON	26	44	59%	1	4%	15	58%	0	0%	10	38%
159	WORTH	49	46	107%	6	12%	39	80%	1	2%	3	6%
	Grand Totals	36,715	47,086	78%	3,127	9%	23,382	64%	5,248	14%	4,958	14%