

University Publications.

Pandora.

EDITORS OF PANDORA FROM 1886 TO PRESENT TIME.

VOLUME I, 1886.

Editor-in-Chief.
G. N. WILSON, K A.
Business Manager.
W. B. COOK, A T Ω.

Associate Editors.

W. E. Wooten, ≈ A E. M. B. Bond, Δ T Δ.
S. McDaniel, X φ. W. S. Upshaw, Δ T Δ.
C. F. Rice, X φ. R. L. Moye, φ Γ Δ.
C. H. Wilcox, K A. P. L. Wade, φ Γ Δ.
W. A. Speer, φ Δ Θ. A. W. Wade, ≈ N.
F. S. Stone, φ Δ Θ. W. G. Bsown, ≈ N.
R. D. Meader, A T Ω.

VOLUME II, 1887.

Editor-in-Chief.
C. F. RICE, X φ.
Business Manager.
J. W. DANIEL, K A.

Associate Editors.

T. W. Reed, φ Δ Θ. Wilmer L. Moore, ≈ A E.
Glen Waters, φ Γ Δ. T. Remsen Crawford, A T Ω.
W. J. Shaw, ≈ N. Frank W. Coile, ≈ N.
H. Key Milner, A T Ω. Lucian L. Knight, X φ.
A. L. Franklin, Δ T Δ. W. M. Glass, Δ T Δ.

VOLUME III, 1888.

Editor-in-Chief.
ALBERT HOWELL, K A.
Business Manager.
ASA W. GRIGGS, φ Γ Δ.

Associate Editors

Wilmer L. Moore, ≈ A E.
T. Remsen Crawford, A T Ω.
Frank W. Coile, ≈ N.
Lucian L. Knight, X φ.
W. M. Glass, Δ T Δ.

VOLUME IV, 1890.

Editor-in-Chief.
JOHN D. LITTLE, ≈ A E.
Business Manager.
WALTER K. WHEATLEY, A T Ω.

Associate Editors.

F. E. Callaway, K A.
S. J. Tribble, φ Δ Θ.
J. G. Crawford, ≈ N.
W. D. Ellis, X φ.
W. L. Stallings, Δ T Δ.
W. N. Smith, X Y.
E. A. Cohen.

VOLUME V, 1892.

Editors-in-Chief.
J. F. LEWIS, X φ.
L. L. BROWN, A T Ω.
Business Manager.
W. E. CRISTIE, ≈ N.
W. T. KELLY, Δ T Δ.
Associate Editors.
J. C. Kimball, ≈ A E.
Roy Dallas, φ Δ Θ.
J. R. Lane, K A.
E. W. Frey, X Y.

VOLUME VI, 1893.

Editor-in-Chief.
HARRY HODGSON, K A.
Business Manager.
FRED. G. BARFIELD, ≈ A E.
Associate Editors.
Charles R. Nisbet, X φ.
Nat. B. Stewart, A T Ω.
Alfred O. Halsey, ≈ N.
Harry A. Alexander.
E. Gerry Cabaniss, φ Δ Θ.
Greene Johnson, Δ T Δ.
Eugene Dodd, X Y.

VOLUME VII, 1894.

Editors-in-Chief.
CHAS. R. TIDWELL, Δ T Δ.
NOEL MCH. MOORE, ≈ A E.
Business Managers.
PAUL L. FLEMING, X φ.
JOHN D. STELLING, A T Ω.
Associate Editors.
Lunsford D. Fricks, ≈ N.
William P. Harbin, X Y.
Henry Brown, K A.
George W. Beckett, φ Δ Θ.

VOLUME VIII, 1895.

Editor-in-Chief.
W. A. HARRIS, X φ.
Business Manager.
J. J. GIBSON, Δ T Δ.
Associate Editors.
H. H. Steiner, ≈ A E.
J. W. Morton, K A.
W. W. Chandler, A T Ω.
W. L. Kemp, ≈ N.
H. V. Black, X Y.
J. T. Dunlap, φ Δ Θ.
J. G. Smith, non.

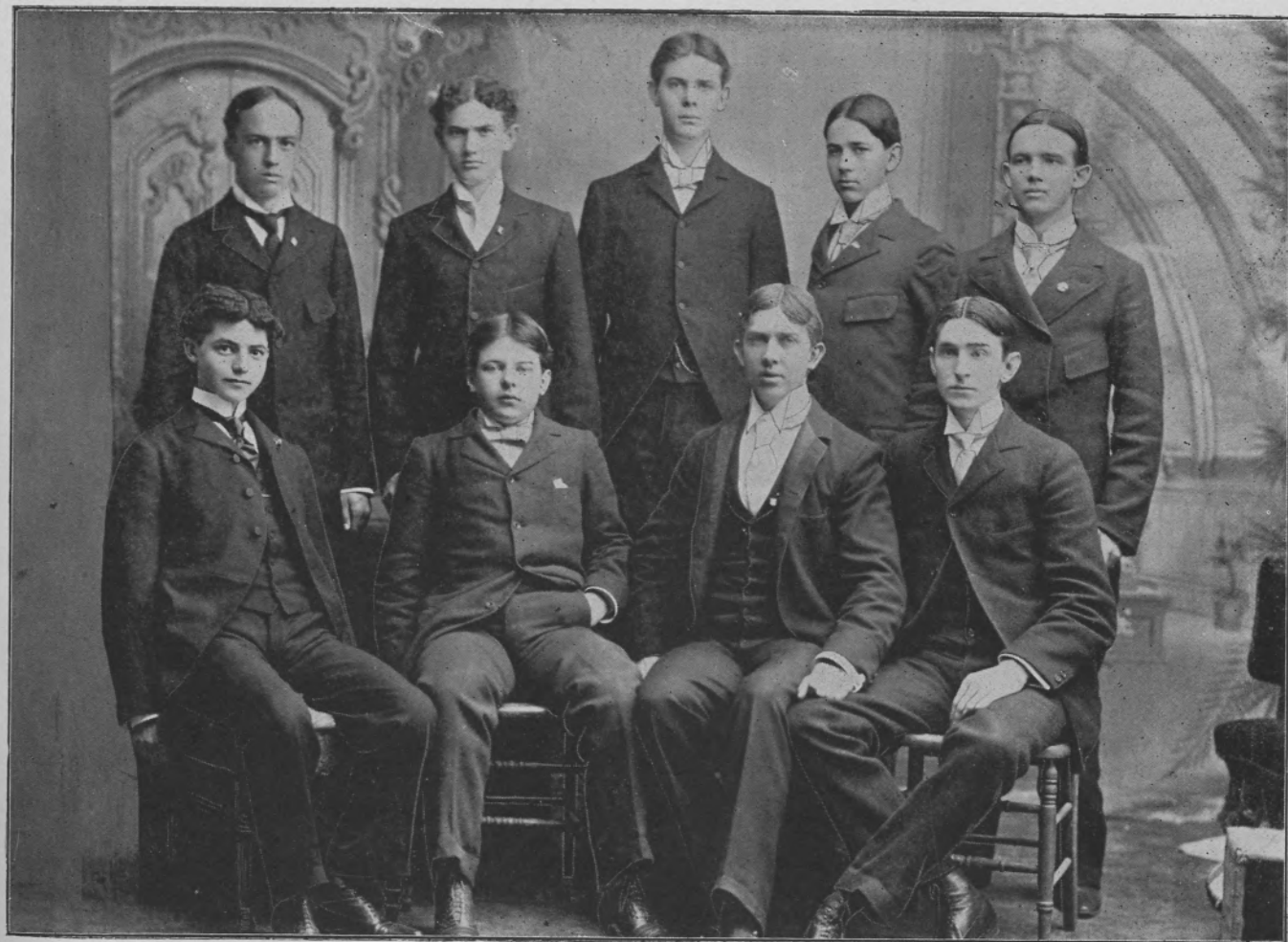
Board of Editors "Red and Black"

SEPTEMBER 15TH TO JANUARY 1ST.

GEORGE W. REOB Editor-in-Chief.
F. K. BOLAND. Business Manager.
W. B. JONES Soliciting Editor.
E. C. RYALS. Local Editor.
I. J. HOFMAYER, }
J. T. BUTNER, } Associate Editors.
JOHN WELCH, }
EUGENE DODD, }
FRANK C. KEEN, }

FROM JANUARY 1ST AD MORTEM.

FRANK C. KEEN Editor-in-Chief.
HARRY B. FLOYD Business Manager.
FRANK L. FLEMING Local Editor.
I. J. HOFMAYER Sporting Editor.
CARL HOLDEN, }
CLIFF WALKER, } Associate Editors.
FRED MORRIS, }
GEO. W. COLLIER, }
W. B. JONES, }



Walker
Hoffmayer

Holden
Floyd

Jones

Keen

Collier

Fleming

Morris

This page blank in scanned document

