

• • Kappa Alpha Fraternity. • •

Founded at Washington and Lee University in 1865. Gamma Chapter Established 1869.

FRATRES IN FACULTATE.

Dr. S. D. Benedict,
Dr. C. H. Herty,

Sylvanus Morris,
C. M. Strahan,

C. P. Wilcox.

FRATRES IN URBE.

Dr. J. C. Bloomfield,
C. P. Wilcox, Jr.,
W. Rowland,
E. R. Hodgson, Jr.,
T. F. Green,
Dr. Kinnebrew,

J. D. Moss,
F. S. Morton,
B. F. Hardeman,
G. R. Nicholson,
E. J. Bonjurant,
L. W. Morton,

J. A. Morton.

LAW CLASS.

P. F. Akin,
M. P. Hall,
J. T. Norris, Jr.,

J. D. Boyd,
G. N. Jones,
J. H. Stephens,

R. D. Stephens.

CLASS OF 1896.

F. S. Jones,

*D. T. Clark.

CLASS OF 1897.

H. W. Stubbs,

*C. H. B. Floyd,

Thos. Basinger.

CLASS OF 1898.

W. G. Basinger,
G. G. Bower,
F. G. Hodgson,

J. A. Davis, Jr.,
*J. P. Callaway,
*T. L. Norris,

J. L. Ramspeck.

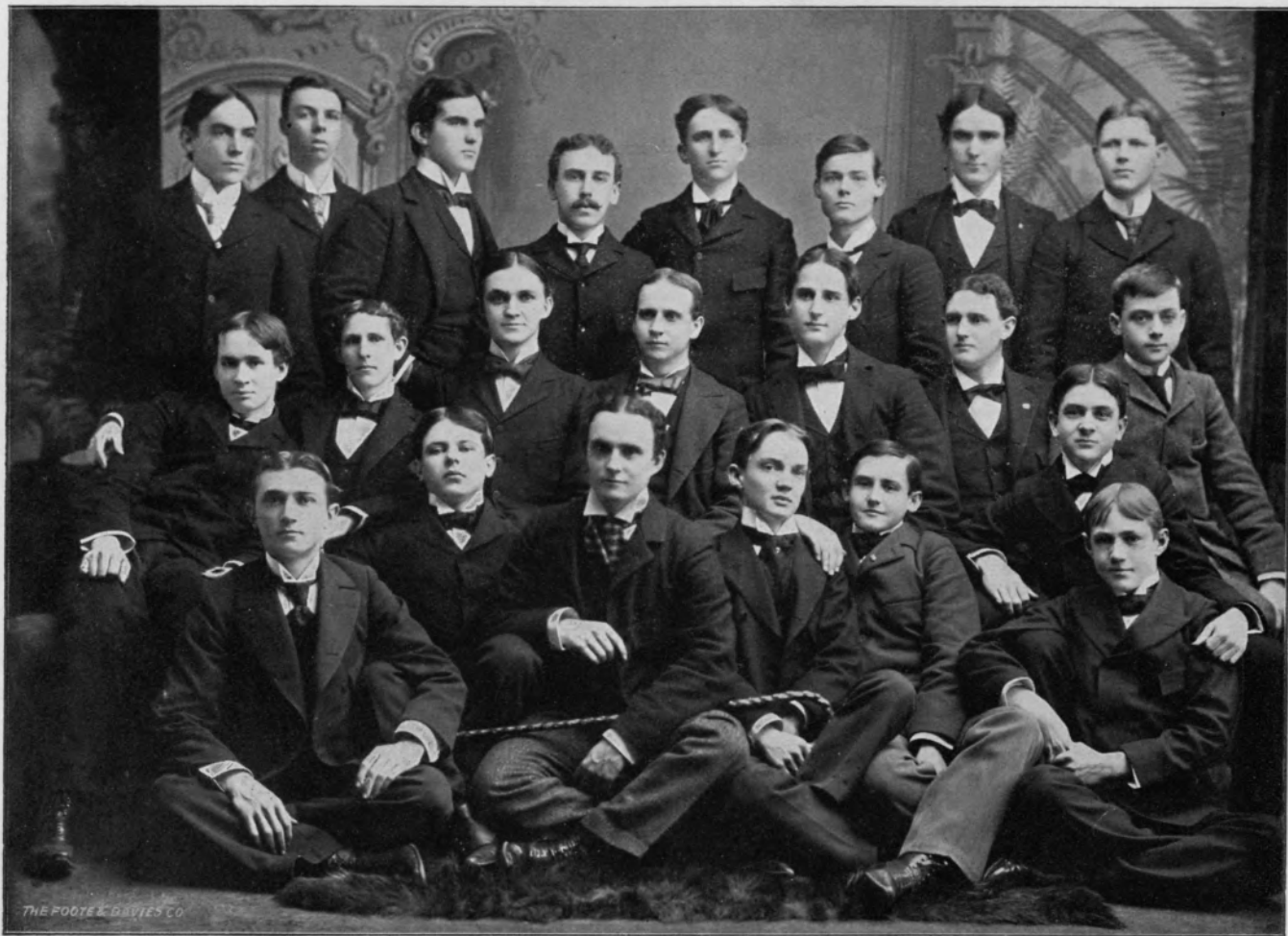
CLASS OF 1899.

F. B. Fowler,

Ed. Lyndon, 2d.

L. L. Harris,

*Left College.



This page blank in scanned document

• • Kappa Alpha Fraternity. • •

Roll of Active Chapters.

ALPHA Washington and Lee University, Lexington, Va.	CHI Vanderbilt University, Nashville, Tenn.
BETA — — — — —	PSI Tulane University, New Orleans, La.
GAMMA University of Georgia, Athens, Ga.	OMEGA Centre College, Danville, Ky.
DELTA Wofford College, Spartanburg, S. C.	ALPHA ALPHA University of the South, Sewanee, Tenn.
EPSILON Emory College, Oxford, Ga.	ALPHA BETA University of Alabama, Tuscaloosa, Ala.
ZETA Randolph-Macon College, Ashland, Va.	ALPHA GAMMA, Louisiana State University, Baton Rouge, La.
ETA Richmond College, Richmond, Va.	ALPHA DELTA William Jewell College, Liberty, Mo.
THETA State A. and M. College, Lexington, Ky.	ALPHA EPSILON S. W. P. University, Clarkesville, Tenn.
IOTA Furman University, Greenville, S. C.	ALPHA ZETA, William and Mary College, Williamsburg, Va.
KAPPA Mercer University, Macon, Ga.	ALPHA ETA Westminster College, Fulton, Mo.
LAMBDA University of Virginia, Albemarle Co., Va.	ALPHA THETA Kentucky University, Lexington, Ky.
NU A. and M. College, Ala.	ALPHA IOTA Centenary College, Jackson, La.
XI Southwestern University, Georgetown, Tenn.	ALPHA KAPPA Missouri State University, Columbia, Mo.
OMICRON University of Texas, Austin, Texas.	ALPHA LAMBDA Johns Hopkins University, Baltimore, Md.
PI University of Tennessee, Knoxville, Tenn.	ALPHA MU Millsaps College, Jackson, Miss.
RHO South Carolina College, Columbia, S. C.	ALPHA NU Columbian University, Washington, D. C.
SIGMA Davidson College, Mecklenburg Co., N. C.	ALPHA OMICRON, University of Arkansas, Fayetteville, Ark.
UPSILON, University of North Carolina, Chapel Hill, N. C.	ALPHA XI University of California, Berkeley, Cal.
PHI Southern University, Greensboro, Ala.	ALPHA PI Leland Stanford, Jr., University, Palo Alto, Cal.