



AL. HAJOS, PHOTOGRAPHER.

'VARSITY FOOTBALL TEAM.

\* \* \* **'Varsity Football Team.** \* \* \*

1897.

	Wm. B. KENT, . . . . .	Captain.	
	FRANK R. MITCHELL, . . . . .	Manager.	
	CHAS. McCARTHY, . . . . .	Coach.	
	R. B. NALLEY, . . . . .	Assistant.	
E. V. BOND, . . . . .	Centre.	H. S. WALDEN, . . . . .	L. T.
G. W. PRICE, . . . . .	R. G.	Y. L. WATSON, . . . . .	L. E.
W. B. KENT, . . . . .	R. T.	W. R. TICHENOR, . . . . .	Q. B.
A. CLARKE, . . . . .	R. E.	J. T. MOORE, . . . . .	R. H. B.
T. B. CLARKE, . . . . .	L. G.	A. C. JONES, . . . . .	L. H. B.
	VON GAMMON, . . . . .	F. B.	

**Substitutes Who Played in Games as Indicated.**

H. O. COX, Q. B., . . . . .	Tech., Virginia.	C. A. MIZE, End, . . . . .	Tech.
G. G. BOWER, H. B., . . . . .	Clemson, Tech.	E. SHANNON, Guard, . . . . .	Tech.
J. H. McINTOSH, H. B., . . . . .	Clemson, Tech.	S. E. BAYLISS, Guard, . . . . .	Virginia.
G. W. BRUNSON, End, . . . . .	Clemson, Tech.	W. R. RITCHIE, Guard, . . . . .	Tech., Clemson.
F. McCUTCHEON, . . . . .		No game.	

**Games Played.**

October 9th, Athens,  
 GEORGIA, 24; Clemson, 0.

October 23d, Athens,  
 GEORGIA, 28; Georgia Tech., 0.

October 30th, Atlanta,  
 GEORGIA, 4; Virginia, 17.

**Games Scheduled.**

(BUT NOT PLAYED BECAUSE OF SUDDEN ENDING OF SEASON.)

November 6th, Nashville, Tenn.,  
 GEORGIA vs. University of Nashville.

November 8th, Sewanee, Tenn.,  
 GEORGIA vs. University of the South.

Thanksgiving, Atlanta,  
 GEORGIA vs. Auburn.

\* \* \* Georgia Second Eleven. \* \* \*

---

E. E. POMEROY, MANAGER. G. G. BOWER, CAPTAIN.

---

CENTRE.

Mason.

GUARDS.

Hicks,

McWhorter.

TACKLES.

Shippe,

Slater,

Scruggs.

QUARTER BACK.

J. Huff.

HALF BACKS.

Young,

Donalson,

Alford,

McCutcheon,

Dent.

ENDS.

Dunbar,

Colquitt,

Wheatley.

FULL BACKS.

Lyndon,

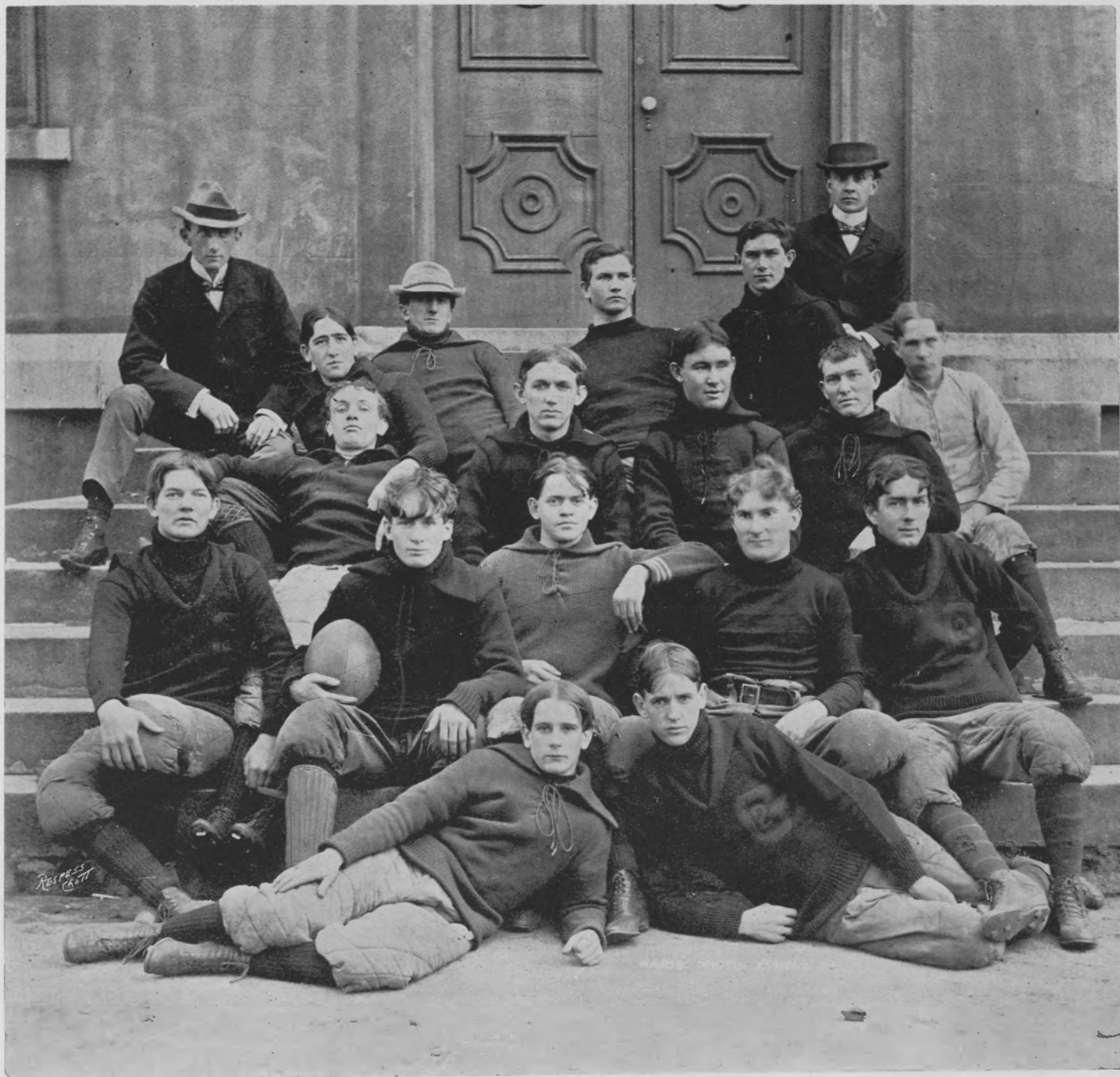
DuBignon.

---

**Officers for '98 Team.**

J. A. SCRUGGS, Manager.

J. HUFF, Captain.



AL. HAJOS, PHOTOGRAPHER.

SECOND ELEVEN.

This page blank in scanned document